



NanoFATE Deliverable 5.5

Research manuscripts on the toxicokinetics of ENP; addressing uptake into biological tissues of aquatic and terrestrial invertebrates.

F. Dondero	UNIPMN, It, Alessandria
P. Kille, J. Morgan	CU, UK, Cardiff
A. Crossley	UOXF.DJ, UK, Oxford
S. Loureiro	UAVR, P, Aveiro
C.A.M vanGestel,	VUA, NL, Amsterdam
D. Spurgeon, Claus Svendsen	NERC, UK, Wallingford
W. Lojkowski	IHPP, PI, Warsaw

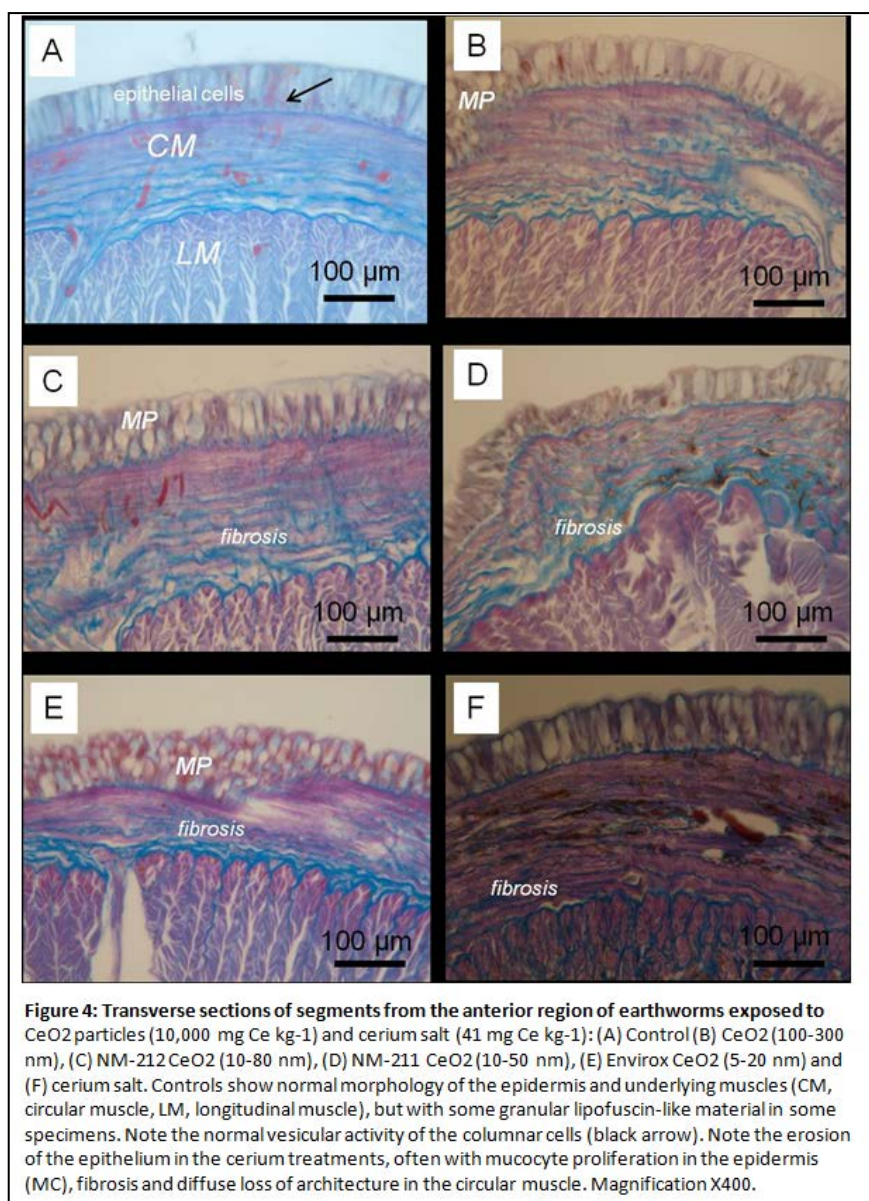
Research Report Summary

D5.5 deliverable consists of a collection of 6 manuscripts that covers bioaccumulation of ENPs and their respective ionic counterparts in biological systems. Bioconcentration Factor (BCF) values and -when possible- uptake (k_1) and release (k_2) constants were determined according to various mathematical models including the one-compartment model. These studies were carried out on several and distinct biological systems that differ from each other for both structural/morphological features and/or their ecological niche: unicellular algae, springtails, daphnids, terrestrial detritivores (*Eisenia* spp) and marine filter feeding bivalves (*Mytilus* spp). In general, it appears that ionic forms are accumulated to greater extent than ENPs, however, the emerging picture is rather heterogeneous. Higher BCF values for ions were observed in earthworms exposed to cerium (ms # 4), but less clear effects for silver were envisaged, possibly due to metal speciation in the environment (ms # 3). In springtails, higher ionic BCFs were explained by longer k_2 values for silver ENP exposures (ms # 1). In algae, conversely, greater BCF values depend on k_1 , while k_2 does not differ significantly (ms # 2). However, in bivalve molluscs (ms # 5) -taking carefully into account the actual silver dose- the BCF value of ionic silver and those of two different Ag ENP types were very similar. It is likely that feeding strategy is a driving parameter in this sense.

Regarding the ability of tracking nano-objects within cells and tissues, much has been done within the nanoFATE framework in which numerous imaging techniques were experimented. A review of these techniques is presented in ms # 6. Results obtained by means of Coherent Anti-stroke Resonance Spectroscopy (CARS) imaging in algae show virtually no uptake of ENPs in osmotrophic eukaryotes (ms # 2). Manuscripts 3 and 6, instead, show interesting applications of X-ray absorption spectroscopy in samples (thick tissue sections of earthworms) irradiated by synchrotron light. Results do show near edge Ag absorption that is a signature of focal Ag distribution into tissue and might be compatible with the internal presence of ENPs (ms # 3). Moreover, quantitative modelling of X-ray Absorption Near Edge Spectroscopy (XANES) profiles indicate that the Zn atomic centres within the matrix of the focal deposits imaged in epidermis and nephridium of earthworms exposed to ZnO ENPs are associated with oxide, a chemical phase distinguishable from the phosphate-associated Zn pool in the chlorogenic tissue (ms #6).

Manuscript list

#	Organism	ENP	Kinetic parameters	BCF	Imaging	Leading Beneficiary	status
1	Collembola	Ag	X	X		VUA	submitted
2	Algae	Ag	X	X	X	UA	submitted
3	Earthworm	Ag	X		X	NERC/CU	submitted
4	Earthworm	Ce	X	X	X	NERC	submitted
5	Bivalves	Ag		X		UNIPMN	completed
6	Earthworm	Zn			X	NERC/CU	submitted



For more information you can contact:

Project office: NanoFATE@ceh.ac.uk ; Project Coordinator: Claus Svendsen (csv@ceh.ac.uk)

ENP toxicokinetics and toxicodynamics work package leader: Francesco Dondero

(francesco.dondero@mfu.unipmn.it);

Project Website: www.nanofate.eu

March, 2014

NanoFATE is supported by the European Commission under the Seventh Framework Programme. Theme 4: NMP – Nanosciences, Nanotechnologies, Material and new Production Technologies and Theme 6 – Environment (including Climate Change). Gant Agreement no. CP-FP 247739 NanoFATE